

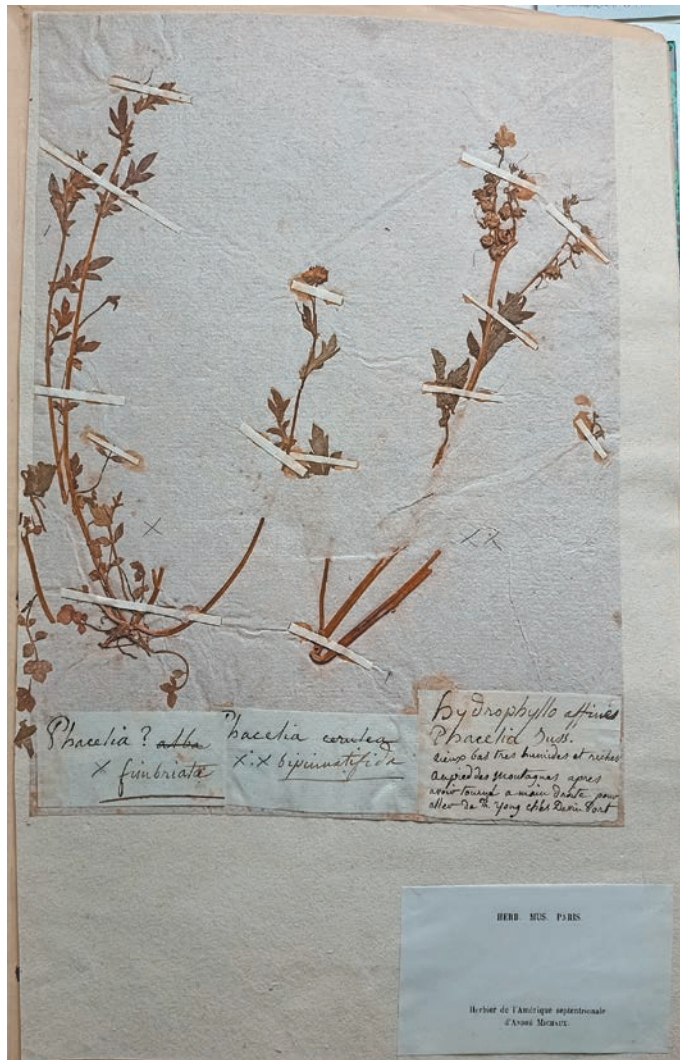
# Hiding in Plain Sight, a New Species of *Phacelia* for the Southern Appalachian Mountains

Jonathan P. Evans,<sup>1\*</sup> J.T. Michel,<sup>1</sup> Skyler J. Fox,<sup>2</sup> and Ashley B. Morris<sup>3</sup>

<sup>1</sup>Department of Biology, University of the South, 735 University Ave., Sewanee, TN 37383

<sup>2</sup>Department of Biology, Georgia Southern University, 1332 Southern Dr., Statesboro, GA 30458

<sup>3</sup>Department of Biology, Furman University, 3300 Poinsett Hwy., Greenville, SC 29613



**Supplemental Figure 1.** Image of the *Phacelia bipinnatifida* holotype provided by the Muséum National D'Histoire Naturelle Paris (PCU). Note that the specimen on the right marked with "XX" is considered the holotype.

\*email address: [jon.evans@sewanee.edu](mailto:jon.evans@sewanee.edu)

Received: 4 December 2024; Accepted 15 April 2025



**Supplemental Figure 2.** Image of the *Phacelia bipinnatifida* isotype (MNHN-P-P00640081) provided by the Muséum National D'Histoire Naturelle Paris (PCU).